

European Alliance of Medical Research Infrastructures

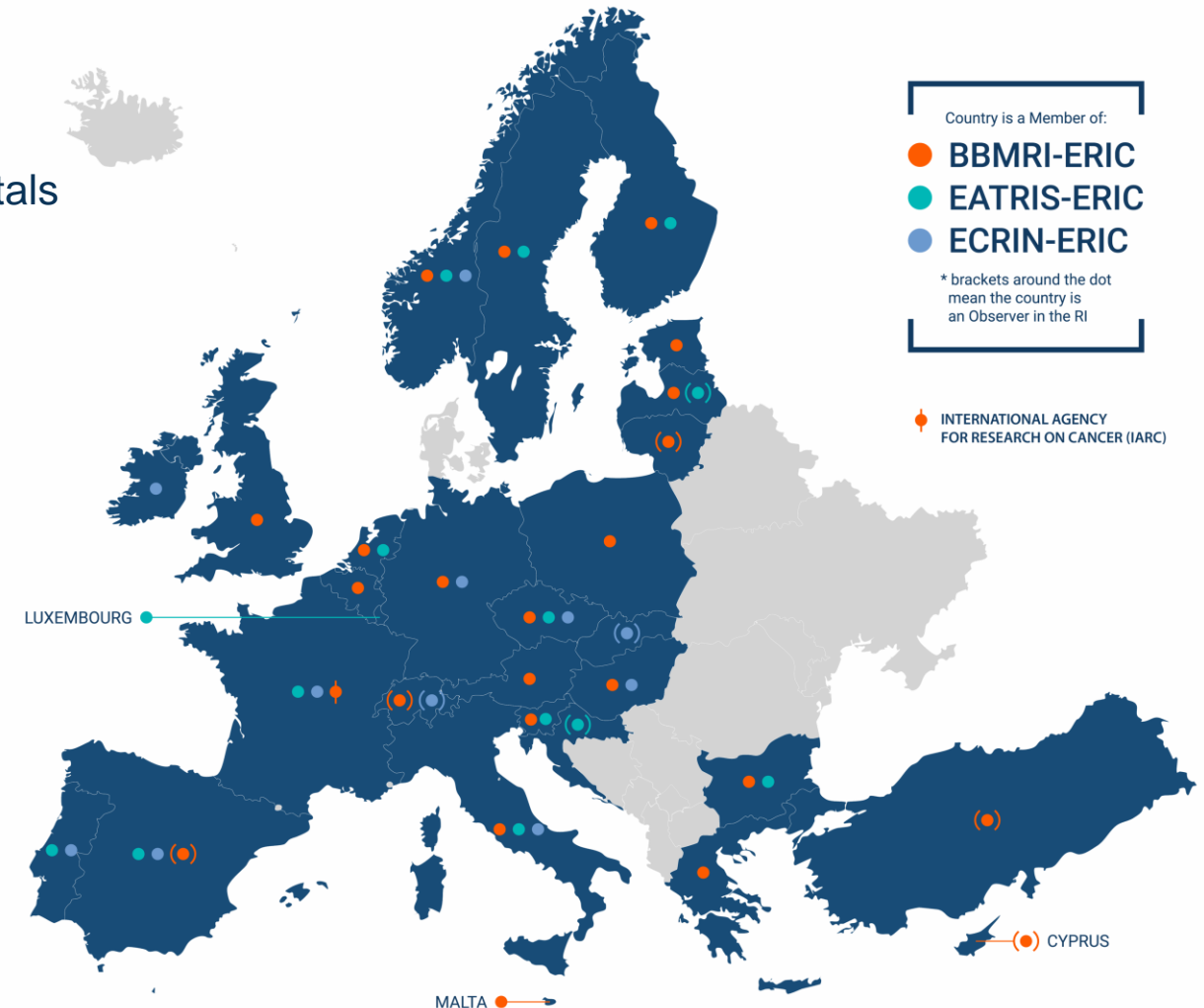


Who we are

- Over 700+ research institutions and university hospitals
- EU-AMRI members started operations in 2014
- **29 European Countries** as Members or Observers

3 areas of focus

- Biobanking & Biomolecular Resources
- Translational research
- Multinational clinical trials



"A research infrastructure is an organization that enables the research community to use specific facilities, resources and services in order to accelerate scientific achievements and promote sustainable research"





European Research Infrastructure for Biobanking and Biomolecular Resources

- Facilitating access to samples, data and biomolecular resources while connecting all stakeholders in biomedical research.



European Research Infrastructure for Translational Medicine

- Provides services for biomedical innovation and translational medicine, from target validation to early clinical trials.



European Clinical Research Infrastructure Network

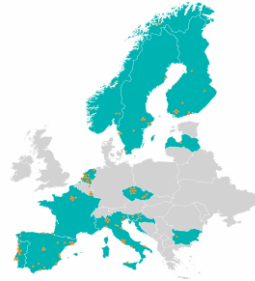
- Facilitating clinical trials across borders, supporting sponsors and investigators to effectively design, plan and conduct multinational clinical trials.



BBMRI-ERIC®

23 member states and IARC

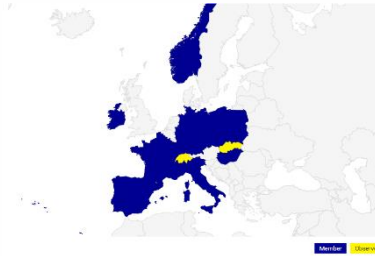
- Biobanking development
- ELSI Services and Research
- IT Services and Research
- Quality management services and research
- Public affairs and stakeholder engagement



eatris

14 member and observer countries

- Over 115 research institutions
- Supporting academia, industry funding bodies, policy makers.
- Regulatory services, education and training, as well as mentoring programmes
- Advanced therapy medicinal products, imaging and tracing, small molecules, vaccines and biomarkers



ecrin

12 member and observer countries

- Over 100 clinical trial units
- Support in designing and planning multinational clinical trials, regulatory clearance, trial implementation
- Operational trial management services
- Development of tools, training, networks for clinical research

WHY JOIN FORCES?



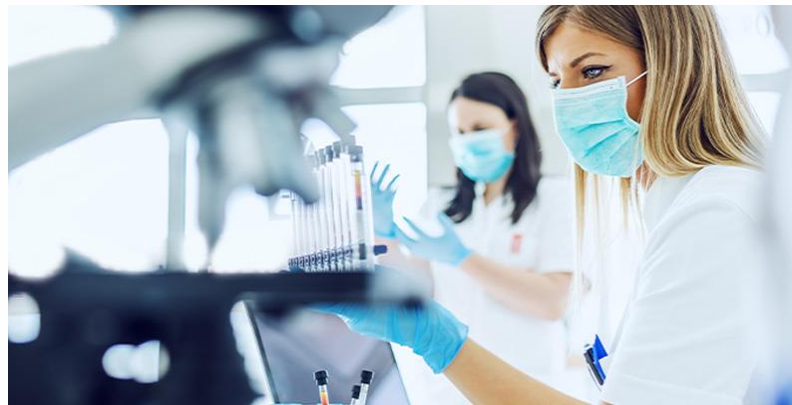
Increase the impact of biomedical research and research infrastructures on patients



Accelerate the development of solutions for unmet medical needs

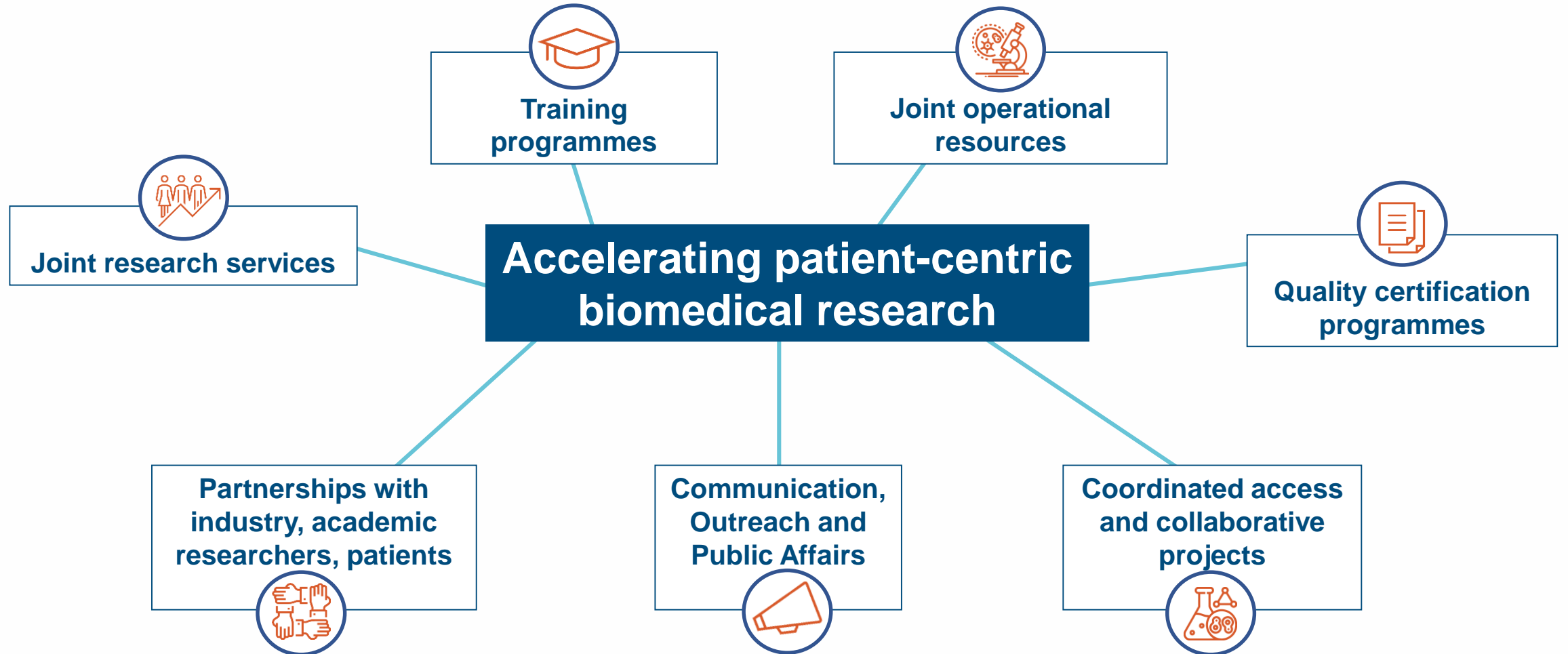


Develop integrated services for complex projects



Foster quality and reproducibility in biomedical research

WHAT DO WE DO TOGETHER



JOINTLY DEVELOPING NEW TOOLS AND SERVICES





LOOKING FORWARD

Accelerating patient-centric biomedical research





1

Short-term

- Joint development of **tools**
- Joint **training** content
- Joint **policy** support
- Joint **partnerships** with user communities, regulators, funders, policy-makers
- Joint **partnerships** with patients

2

Medium-term

- Portfolio of **joint/integrated services**
- **Joint access** procedure for complex projects

3

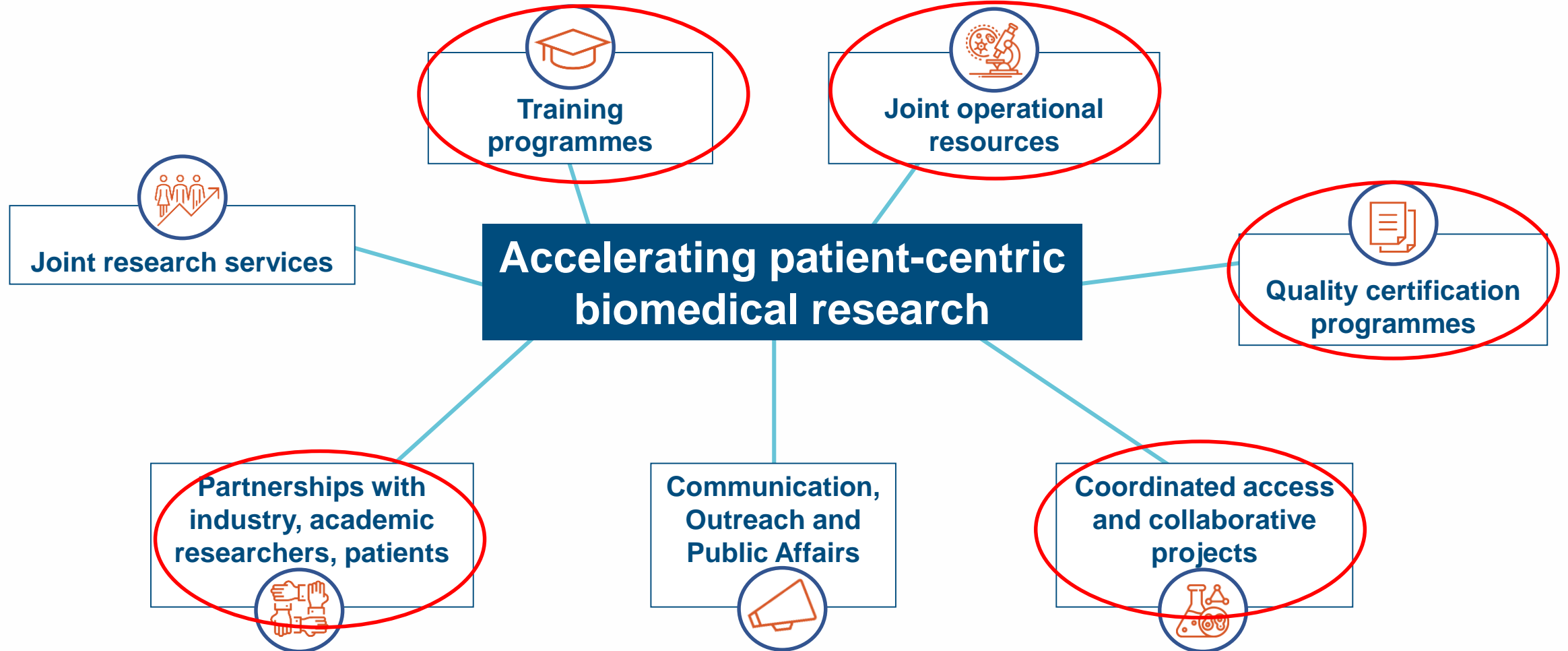
Long-term

- Highly efficient **services** provision **for complex projects**
- Operational **resources** and processes **shared**, where relevant



INTERNATIONAL COLLABORATION







Thank you for your attention



eu-amri.org



contact@eu-amri.org



[EuAmri](https://twitter.com/EuAmri)



[Linkedin.com/company/eu-amri/](https://www.linkedin.com/company/eu-amri/)